

ASSEMBLY TOOL AND WORKSTATION ACCESSORIES



INGERSOLL-RAND ASSEMBLY TOOL AND WORKSTATION ACCESSORIES

At Ingersoll-Rand, we'll not only provide you with the most durable, reliable, and powerful tools in the industry, our turn-key solutions provide everything you need for the entire workstation. In addition to designing and building workstations, we offer a wide assortment of fastening system calibration tools, such as our Expert™ Torque Analysis Systems, that help ensure you're performing at your peak.

AIR SCREWDRIVER ACCESSORIES

Clutch Housing Adjustment Covers



Part Number	Color
Clutch Housing Adjustment Covers (for Q2 angle nutrunners)	
TRL-415-1	Gold
TRL-415-2	Red
TRL-415-3	Blue
TRL-415-4	Green

Pistol Buttplates



Part Number	Color
Pistol Buttplates (for Q2 pistol fasteners)	
TRP-40-B-R	Orange
TRP-40-B-G	Green
TRP-40-B-B	Blue

Flanged Adjustment Covers (for identification)



Part Number	Color
Flanged Adjustment Covers (for Q2 in-line fasteners)	
TRH-40-23-R	Orange
TRH-40-23-G	Green
TRH-40-23-Y	Light grey

Non-flanged Adjustment Covers (for identification)



Part Number	Color
Non-flanged Adjustment Covers (for Q2 in-line fasteners)	
TRH-40-24-R	Orange
TRH-40-24-G	Green
TRH-40-24-B	Blue
TRH-40-24-Y	Light grey



SUPPORT PRODUCTS AND WORKSTATION ACCESSORIES

Parallel Torque Arms



IRBP3-E30

Part Number	Size	Tool	Max Weight	Torque Absorber
Parallel Torque Arms				
IRBP3-N30	30"	Air	10 lb	Yes
IRBP3-E30*	30"	Electric	10 lb	Yes

*Includes clamps to fit high torque Delvo (49380) and VersaTec (49380-1) tools.

FEATURES AND BENEFITS

Air Bias Support System

- Air adjustment by mini-regulator with air cylinder, for proper positioning of different size tools
- Eliminates clumsy spring adjustment of competitive models
- Tool positioning is effortless

Steel and Aluminum Construction

- Anodized finish
- Lightweight
- Heavy-duty for high volume production
- Corrosion-resistant

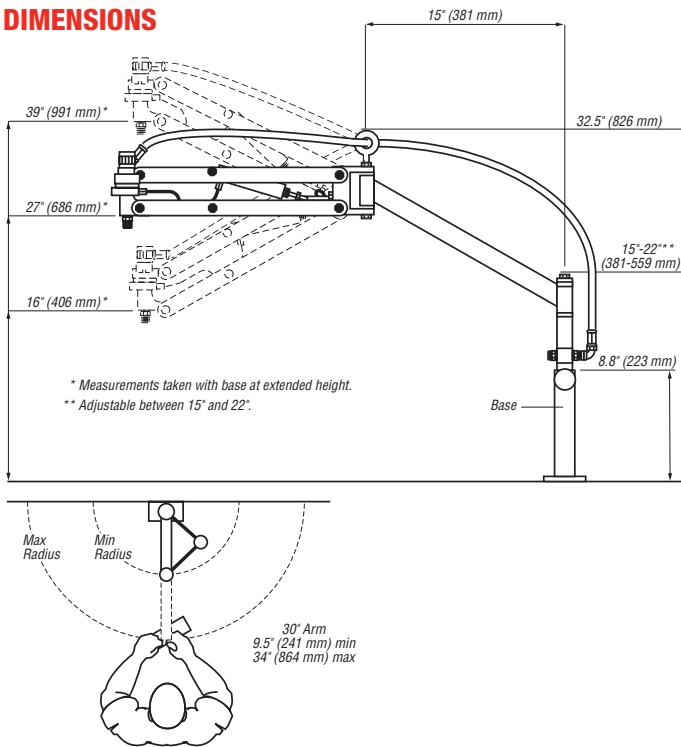
Parallel Arm Torque Absorber

- Absorbs torque reaction up to 120 in-lb
- Increases torque repeatability through shift changes by reducing operator influence on fastener
- Keeps tools off the floor

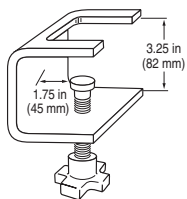
Auto-orientation System

- Tool fixture is designed to allow constant perpendicular orientation of the tool, which ensures proper fastener alignment

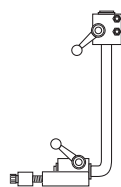
DIMENSIONS



Parallel Torque Arm Accessories



48732-1



IR49541

Part Number	Description
Parallel Torque Arm Accessories	
48732-1	Bench clamp for mounting arm in place
IR49541	Swivel mount kit grip & angle tools (adapts pistol to the workstation)



SUPPORT PRODUCTS AND WORKSTATION ACCESSORIES

Single Arm Workstations



IRBS3-N30
(hose, FRL, and balancer not included)



IRBS3-E0

Part Number	Size	Tool	Max Weight	Torque Absorber
Single Arm Workstations				
IRBS2-N0	24"	Air	15 lb	No
IRBS2-N24	24"	Air	15 lb	Yes
IRBS3-N0	30"	Air	15 lb	No
IRBS3-N30	30"	Air	15 lb	Yes
IRBS2-E0	24"	Electric	15 lb	No
IRBS2-E24	24"	Electric	15 lb	Yes
IRBS3-E0	30"	Electric	15 lb	No
IRBS3-E30	30"	Electric	15 lb	Yes

FEATURES AND BENEFITS

Steel Construction with E-Coat

- Lightweight but durable for continuous duty
- Corrosion-resistant

Balancer Hanger

- All arms are equipped with a roller-mounted balancer hanger for smooth motion of the tool

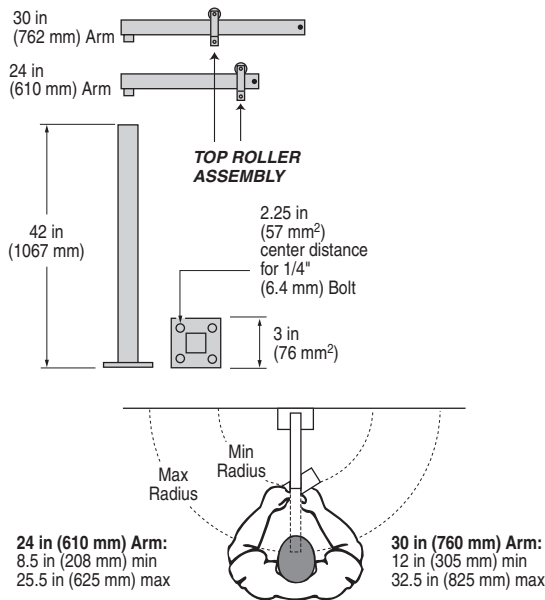
Flexible

- Your choice of 30" or 24" lengths for electric or air tools

Electric Cord Clamp Kit

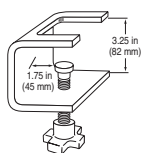
- Standard with appropriate models

DIMENSIONS



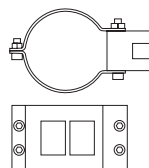
Single Arm Workstation Accessories

BENCH CLAMP



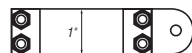
48732-1

ELECTRIC TOOL CLAMP

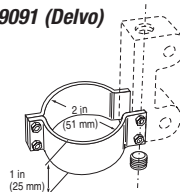


49091-1 (VersaTec)

ELECTRIC TOOL CLAMP



49091 (Delvo)



Part Number	Description
Single Arm Workstation Accessories	
IR48723-2	Single arm torque absorber, this telescoping arm improves flexibility & eliminates torque reaction from the tool
48732-1	Bench clamp for mounting arm in place
49091	Electric tool clamp (Delvo)
49091-1	Electric tool clamp (VersaTec)

NUTRUNNER ACCESSORIES

Mounting Plate



Part Number	For Use With
Mounting Plate	
DAM-K48	D Series

Exhaust Deflector



DAA40-A23

Part Number	For Use With
Exhaust Deflector	
DAA40-A23	D Series
Backcap Kit	
DAM-K25	D Series

Swivel Hanger



Part Number	For Use With
Swivel Hanger	
DAA40-K364	D Series

Flush Hex Sockets



8SA34-807M

Part Number	Description	For Use With
Flush Hex Sockets		
182A88-807	Flush hex sockets	9 Series, 83 angle head
8SA34-807M	Flush hex sockets	6 & 7 Series, 3D6 angle head; 8 & 9 Series, 32 angle head
8SA56-807M	Flush hex sockets	8 & 9 Series, 32 angle head
182A13MF-807	Flush hex sockets	8 & 9 Series, 32 angle head
182A15MF-807	Flush hex sockets	8 & 9 Series, 32 angle head



SPINDLES AND ANGLE HEAD ACCESSORIES

1/4" Square Drive Spindles



141A9-A607-1/4

Part Number	Description	For Use With
1/4" Square Drive Spindles		
TRL2-A607-S4	1/4" square drive spindle	Q2 Series
48404-1 (assembly)	1/4" square drive spindle	41 Series
141A9-A607-1/4	1/4" square drive spindle	5 Series, 7 Series

3/8" Square Drive Spindles



6L2D-A607

Part Number	Description	For Use With
3/8" Square Drive Spindles		
TRL2-A607-S6	3/8" square drive spindle	Q2 Series
48405-1 (assembly)	3/8" square drive spindle	41 Series
141A12-A607	3/8" square drive spindle	5 Series, 7 Series
6L2D-A607	3/8" square drive spindle	6 Series

1/4" Screwdriver Hex Bit Holder Spindles



5L2C3-B586

Part Number	Description	For Use With
1/4" Screwdriver Hex Bit Holder Spindles		
TRL2-A607-Q4	1/4" screwdriver hex bit holder spindle	Q2 Series
48402-1 (assembly)	1/4" screwdriver hex bit holder spindle	41 Series
5L2C3-B586	1/4" screwdriver hex bit holder spindle	5 Series

1/4" Screwdriver Hex Insert Bit Holder Spindles



5L2C4-B386

Part Number	Description	For Use With
1/4" Screwdriver Hex Insert Bit Holder Spindles		
48403-1 (assembly)	1/4" screwdriver hex insert bit holder spindle	41 Series
5L2C4-B386	1/4" screwdriver hex insert bit holder spindle	5 Series

Angle Head Extensions



8SL-A327-6

Part Number	Description	For Use With
4" Angle Head Extension Assembly		
6WT-A327-4	4" angle head extension assembly	6 Series
6" Angle Head Extension		
8SL-A327-6	6" angle head extension	8 Series, 9 Series

ELECTRIC SCREWDRIVER ACCESSORIES

Extension Cable — For Low Torque Models



Part Number	Description
Extension Cable — For Low Torque Models*	
ES40T-249-2	Extension cable — for low torque models

**For use on push and 6-1/2" trigger start models ES60, ES70, ES80, and ES90 (standard on ES100).*

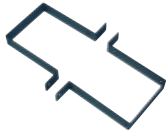
Attachable Pistol Grip Handle



Part Number	Description
Attachable Pistol Grip Handle*	
DLW2100TP	Attachable pistol grip handle

**For use on push and trigger start models ES60, ES70, ES80, and ES90 (standard on ES100).*

Controller Mounting Bracket



Part Number	Description
Controller Mounting Bracket	
EC24-MB	Controller mounting bracket

Torque Adjusting Wrench



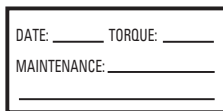
Part Number	Description
Torque Adjusting Wrench	
EP4007N-516	Torque adjusting wrench



User

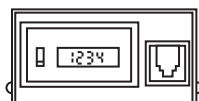
ELECTRIC SCREWDRIVER ACCESSORIES

Calibration / Maintenance Labels



Part Number	Description
Calibration / Maintenance Labels	
EP4007N-302	Calibration / maintenance labels

Digital Counter



Part Number	Description
Digital Counter	
EC24-DC	Digital counter

Low Profile Flange



Part Number	Description
Low Profile Flange*	
EP4007N-123	Low profile flange

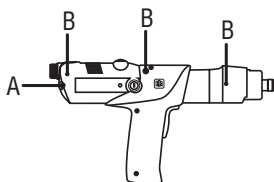
*Standard for pistol and angle models.

Torque Adjustment Cover



Part Number	Description
Torque Adjustment Cover	
ES60T-675	Torque adjustment cover

Suspension Bails



Part Number	Description
Suspension Bails	
EP4007N-365	A – Vertical suspension bail
EP4007N-366	B – Horizontal suspension bail
EL0109B-365	Low torque vertical suspension bail

Additional Cords



EP4007N-239-C6A

Part Number	Description
Additional Cords	
EP4007N-239-C6A	6' coiled additional cord (high torque)
EP4007N-239-8A	8' straight additional cord (high torque)
EP4007N-239-12A	12' straight additional cord (high torque)
EP4007N-239-25	25' straight additional cord (high torque)

SUSPENSION ACCESSORIES

Horizontal Hangers



48934



TRP-A365

Part Number	Description	For Use With
Horizontal Hangers		
48934	Horizontal hanger	41 Series
6WS-366	Horizontal hanger	5 Series, 6 Series, 7 Series,
8SL-366	Horizontal hanger	8 Series
9SL-366	Horizontal hanger	9 Series
TRP-A365	Horizontal hanger	Q2 Series
7RA-A366	Horizontal hanger	5 Series, 7 Series

Reaction Bar Holders



8SL-A60

Part Number	Description	For Use With
Reaction Bar Holders		
8SL-A60	Reaction bar holder	8 Series
9SL-A60	Reaction bar holder	9 Series

Reaction Bars



R1A-A48

Part Number	Description	For Use With
Reaction Bars		
R1A-A48	Reaction bar (1/2" hex except for 6 Series)	6 Series
9SL-48	Reaction bar (1/2" hex except for 6 Series)	8 Series, 9 Series

Suspension Bails



46328



7L-365

Part Number	Description	For Use With
Suspension Bails		
7L-365	Suspension bail	Q2 Series, 5 Series, 6 Series, 7 Series, 8 Series
46328	Suspension bail	41 Series
5RL-365	Suspension bail	5 Series

Dead Handles



728N-A48

Part Number	Description	For Use With
Dead Handles		
48931	Dead handle	41 Series
728N-A48	Dead handle*	5 Series
R1A-A48	Dead handle*	7 Series
Dead Handle Adapters		
5A-49	Dead handle adapter	5 Series
7A-49	Dead handle adapter	7 Series

*For retrofitting add dead handle adapter.



User

DC TOOL ACCESSORIES

Cables



GEA40-CORD-3M



GEA40-CORD-6M-90

Part Number	Description	Length	For Use With
Cables			
GEA40-CORD-3M	Tool cables	3 m	QE & QM Series
GEA40-CORD-6M	Tool cables	6 m	QE & QM Series
GEA40-CORD-10M	Tool cables	10 m	QE & QM Series
GEA40-CORD-3M-90	90° tool cables	3 m	QE & QM Series
GEA40-CORD-6M-90	90° tool cables	6 m	QE & QM Series
GEA40-CORD-10M-90	90° tool cables	10 m	QE & QM Series
GEA40-EXT-10M	Extension cables	10 m	QE & QM Series
GEA40-EXT-20M	Extension cables	20 m	QE & QM Series
GEA40-EXT-40M	Extension cables	40 m	QE & QM Series

Extension Cables



DEA40-CORD-10

Part Number	Description	For Use With
Extension Cables		
DEA40-CORD-10	Tool extension cables	DEA Series
DEA40-CORD-20	Tool extension cables	DEA Series

Lever Kits



GEA40-K98EL

Part Number	Description	For Use With
Lever Kits		
GEA40-K98SL	Short lever kit	QE Series
GEA40-K98EL	Extended lever kit	QE Series

Swivel Hanger Kit



Part Number	For Use With
Swivel Hanger Kit	
GEA40-K364	QE6 & QE8 Series

Suspension Bail



Part Number	For Use With
Suspension Bail	
7L-365	QE Series

DC TOOL ACCESSORIES

Reaction Bar Kits



Part Number	For Use With
Reaction Bar Kits (for retrofitting add DAA4-27)	
GEA15-K48	QE4 Series
GEPTS15-K48	QE4TS Series
DEA120-K48	QE6 & QE8 Series

Flanged Mounting Kits



Part Number	For Use With
Flanged Mounting Kits (for retrofitting add DAA4-27)	
15E4-K48	QE4 Series
GEM120-K48	QE6 & QE8 Series

Mounting Plate Kits



Part Number	For Use With
Mounting Plate Kits (for retrofitting add DAA4-27)	
GEA4-K48	QE4 Series
DAM120-K48	QE6 & QE8 Series

Socket Trays



Part Number	Description
Socket Trays	
IC-SOCKET-4	4-position socket tray
IC-SOCKET-8	8-position socket tray

Selector Switches



Part Number	Description
Selector Switches	
IC-SELECT-4	4-position remote selector switch
IC-SELECT-8	8-position remote selector switch

Palm Button Reset Station



Part Number	Description
Palm Button Reset Station	
IC-PALM-RESET	Palm button reset station



DC TOOL ACCESSORIES

Emergency Stop Button



Part Number	Description
Emergency Stop Button	
IC-ESTOP	Emergency stop button

Light Tower



Part Number	Description
Light Tower*	
LCE-FB	Light tower

**Other options available upon request (number of lights, colors, and buzzer).*

Communication Hubs



IC-SW-5

Part Number	Description
Communication Hubs	
IC-SW-5	Industrial-duty 5-port switch
IC-SW-16	Industrial-duty 16-port switch
IC-SWS-5	IP67 sealed 5-port switch
IC-SWS-16	IP67 sealed 16-port switch

Wall Mounting Bracket



3002007

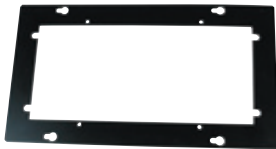
Part Number	Description
Wall Mounting Bracket	
3002007	Wall mounting bracket

Table Mounting Bracket



Part Number	Description
Table Mounting Bracket	
3002008	Table mounting bracket

Cabinet Mounting Bracket



Part Number	Description
Cabinet Mounting Bracket	
3002010	Cabinet mounting bracket

Parameter Transfer Key



Part Number	Description
Parameter Transfer Key	
8015013	Parameter transfer key

TORQUE ANALYSIS SYSTEMS

The expanding range of Ingersoll-Rand Expert Torque Analysis Systems provides the perfect complement for precision fastening tools. Our line features the ETA Series, incorporating the latest digital technology, and includes the proven ETW Expert products, widely used throughout the industry — and even the space program — where precise calibration is essential.

ETW-E SERIES EXPERT ELECTRONIC TORQUE WRENCH

The Expert ETW-E wrenches are powerful, compact systems capable of:

- Performing advanced tightening strategies, including torque control, angle control, and yield control
- Recording tightening data
- Displaying current SPC information for tightening operations

Typical Applications

- A laboratory device for developing fastening specifications for applications
- Low volume assembly
- SPC quality control and data collection
- Interchangeable heads

Custom Application Setups

- Stores custom fastening strategies for specific applications

Data Storage

- Stores up to 1,000 final tightening values per application setup (up to 2,500 maximum values)
- Stores up to 10 tightening curves

Four Tightening Modes

- Torque control — For accurate torque tightening
- Torque plus angle control — For tightening to a specific angle beyond snug; improved clamp load consistency on more critical applications
- Yield control — For tightening to yield point of fastener; for obtaining maximum clamp load from fastener

Statistical Capability

- SPC calculations including mean, standard deviation, CP, CM, CMK, CAM and CPK, can be viewed on screen or sent to a PC

Six Languages

- English, French, German, Italian, Spanish, Swedish

Direct Computer Interface

- Integral RS232 port allows for direct connection of tool to computer for downloading fastening data
- For additional functionality, it can be used in conjunction with the PC Companion software

The Expert Wrench features significantly enhance the scope of information delivery, as well as accessibility and ease of use:

- Built-in, non-contact angle measurement
- Onboard storage of tightening data to eliminate the need for a local PC
- Quality control limits on tightening parameters give an instant picture of the fastening quality and help ensure a “good” tightening

Part Number	Max Torque Nm	Min Torque Nm	Length in (mm)	Weight lb (kg)
Expert Torque Wrenches				
ETW-E25	25	2.5	20" (510 mm)	2.2 (1)
ETW-E75	75	7.5	20" (510 mm)	2.2 (1)
ETW-E180	180	18.0	20" (510 mm)	2.2 (1)

Expert Torque Wrenches



ETW-E25

INCLUDED WITH EACH ETW-E KIT:

- ETW-E Wrench
- Storage case
- Battery charger
- User operation and maintenance manual
- Calibration certificate traceable to NIST (National Institute of Standards and Technology)

Part Number	Description
Expert Torque Wrench Accessories	
ETW-CONNECT	PC software
80097777	Printer cable
80097793	PC cable
ETW-R06	3/8" square ratchet head
ETW-R08	1/2" square ratchet head



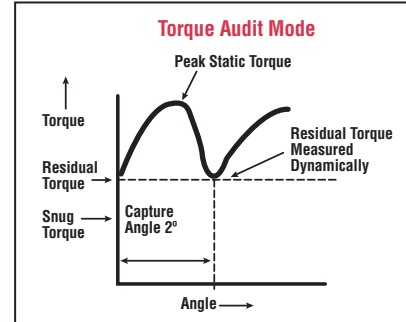
ETW-A SERIES EXPERT ELETRONIC TORQUE AUDIT WRENCH

The Ingersoll-Rand ETW-A Expert wrench is designed to operate in two distinct modes. First, it can be used as a torque audit wrench for accurately auditing the residual torque on previously tightened threaded fasteners. It can also be used as a standard digital electronic torque wrench, either in peak torque or dynamic track torque mode.

TORQUE AUDIT MODE (INSTANT)

When used in Instant mode:

- The residual torque of a fastener is measured dynamically
- The torque is captured as the fastener is rotated
- The wrench ignores the static peak torque required to start the fastener and then takes a dynamic torque measurement
- Variation due to operator influence in the process is reduced or eliminated by this mode



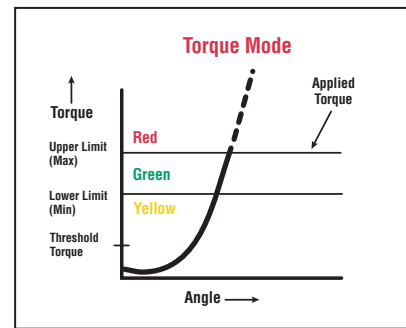
TORQUE MODE (NORMAL)

When used in Normal (Peak) mode:

- The status of the tightening is compared to the upper and lower set process limits and is indicated by the tri-colored LED

When used in Normal (Track) mode:

- The display shows the applied torque at the current moment in time



Audit Torque Wrenches



ETW-A25

Part Number	Torque Range Nm (lb-ft)	Length in (mm)	Weight lb (kg)
Audit Torque Wrenches			
ETW-A25	2.5 – 25 (1.8 – 18)	20" (510 mm)	2.2 (1)
ETW-A75	7.5 – 75 (5.5 – 55)	20" (510 mm)	2.2 (1)
ETW-A180	18 – 180 (13 – 133)	20" (510 mm)	2.2 (1)

INCLUDED WITH EACH ETW-A KIT:

- ETW-A torque audit wrench (25 Nm, 75 Nm, or 180 Nm)
- Storage case
- User operation and maintenance manual
- Calibration certificate traceable to NIST (National Institute of Standards and Technology)

Part Number	Description
Audit Torque Wrench Accessories	
80097777	Printer cable
80097793	PC cable

ETT SERIES EXPERT™ TORQUE TESTER

ETT Series Expert™ Torque Tester



Part Number	Torque Range in-lb (Nm)	Accuracy FSD	Weight lb (kg)	Dimensions in (mm)
ETT Series Expert™ Torque Tester				
ETT-1-US	0.88 – 8.8 (0.1 – 1)	0.5%	5.0 (2.7)	9-1/4" x 8-1/4" x 2-3/4" (213 x 238 x 70)
ETT-4-US	3.50 – 35.0 (0.4 – 4)	0.5%	5.0 (2.7)	9-1/4" x 8-1/4" x 2-3/4" (213 x 238 x 70)
ETT-12-US	10.60 – 106 (1.2 – 12)	0.5%	5.0 (2.7)	9-1/4" x 8-1/4" x 2-3/4" (213 x 238 x 70)
ETT-30-US	26.50 – 265 (3.0 – 30)	0.5%	5.0 (2.7)	9-1/4" x 8-1/4" x 2-3/4" (213 x 238 x 70)

FEATURES AND BENEFITS

- Recommended for most hand screwdrivers, wrenches, or power tools
- Ideal for testing output torque of assembly tools in the calibration lab, repair crib, or on the production line
- Six different languages (English, French, German, Italian, Spanish, and Swedish) standard on all units
- Nine units of measurement for compatibility with global standards
- Charger is equipped with different adaptors to make it easy to use in most of the world
- Four operation modes: Peak, Click, Impulse, and Track modes
- High, pass, low LED's
- Auto and manual reset function
- Data transfer function to a PC or printer via the RS232 port
- Diagnostics keep track of past and future calibration dates and current software release
- 8 hours of battery time under normal use
- Auto power down timer keeps unit charged longer
- Quick-clamp mounts integrated into housing
- Quick-disconnect plate available for convenient mounting structure
- Certificate of calibration from National Institute of Standards and Technology included with every unit

ETA UNIT INCLUDES:

Part Number	Item
ETT1 / ETT4 / ETT12 / ETT30	Torque analyzer
ETT-BC	Battery charger
ETT-RA	Rundown adaptor
ETT-CASE	Carrying case
ETT-P7574	Operating manual
ETA2-99	Certificate of calibration



Part Number	Description
ETT Series Expert™ Torque Tester Accessories	
ETA2-P925	Printer connector cable
ETT-QD	Quick-disconnect plate
ETA2-PC99	PC connector (RS232)



ETA SERIES EXPERT TORQUE ANALYZER

The Ingersoll-Rand ETA Series Expert Torque Analyzer is designed for use with a broad range of transducers to dynamically measure and record the torque output of all types of fastening tools, including pulse tools. The Expert Torque Analyzer has full statistical capability, and all data can be downloaded to a computer or printer via the RS232 port. The full line of joint kits facilitates testing of fastening tools in the tool crib, quality lab, or on the line.

The ETA Series of products offers stationary transducers that mount to a table or cart, rotary transducers to use right on the job, and joint kits to simulate a variety of conditions from hard to soft joints.

ETA Series Expert Torque Analyzer



ETA Features	Part Number	
	ETA2	ETA5
Monitors torque, pulse count, and angle	■	■
Reads in peak, click, pulse, or track mode	■	■
Memory holds 200 readings in measure mode	■	■
Range, mean, and Sigma calculations, CP, CPK, CM, CPM	■	■
9 units of measure	■	■
High, pass, and low indicator	■	■
Time and date stamped	■	■
Download to PC or printer	■	■
Password protected	■	■
Power saver "OFF" mode	■	■
Six languages	■	■
Extended 20,000 readings		■
250 configurations, 25 torque rounds		■
Accepts bar code input		■
PC Comms compatible	■	■
NiMh battery provides over 8 hours of use	■	■

ETA UNIT INCLUDES:

Part Number	Item
ETA2 or ETA5	Torque analyzer
ETA2-STRAP	Camera-type neck strap
ETA2-BC	Universal battery charger
ETA2-P525	Port saver
ETA2-PC99	PC connector cable
ETA2-P925	Printer cable
ETA2-CASE	Carrying case
7464 or 7529	Operating manual
	Calibration certificate

FEATURES AND BENEFITS

- Reads a variety of tools such as standard air tools, pulse tools, and click wrenches
- Any of six different languages (English, French, German, Italian, Spanish, and Swedish) may be selected on the Expert Torque Analyzer
- Charger is equipped with three adapters to make it easy to use in most of the world

Rear View of the ETA Torque Analyzer



TRANSDUCERS

Ingersoll-Rand rotary and stationary transducers span the range of 1.5 to 1,000 Nm. These transducers will work with pulse tools, nutrunners, screwdrivers, click wrenches, hand torque wrenches, and direct drive tools and motors in either a clockwise or counterclockwise direction. Their patented “wrap around” brush system reduces the chance of noise in the signal and eliminates the possibility of contact loss.

FEATURES AND BENEFITS

- The ETA “Smart” Series transducers are specifically designed to work with ETA analyzers
- The ETA2 or ETA5 Analyzer will automatically identify the transducer’s range and calibration through data stored on its “Smart” chip
- ETA Series transducers are available to measure either torque or torque and angle of rotation

CABLE

ETA2-TC industry standard cable is required to connect IS transducers to ETA analyzers.

TRANSDUCER TECHNICAL DATA

Overload Capacity	125% of rated max capacity
Static Accuracy	0.3%
Zero Offset Stability	0.1% of capacity per C
Operating Temp	13 – 104° F
Angle Resolution	.5°

Rotary Transducers



Drive Size	Transducer Range			Industry Standard*	ETA Series “Smart” Transducers	
	Nm	in-lb	ft-lb		Torque	Torque & Angle
Rotary Transducers*						
1/4" Hex	.10 – 2	1.0 – 18	-	TR2H4	-	-
1/4" Hex	.25 – 5	2.2 – 44	-	TR5H4	TRD5H4	TRDA5H4
1/4" Hex	1.0 – 20	9.0 – 180	-	TR20H4	TRD20H4	TRDA20H4
1/4" Square	1.0 – 20	9.0 – 180	-	TR20S4	TRD20S4	TRDA20S4
3/8" Square	3.8 – 75	-	2.8 – 55	TR75S6	TRD75S6	TRDA75S6
1/2" Square	9.0 – 180	-	6.7 – 133	TR180S8	TRD180S8	TRDA180S8
3/4" Square	12.5 – 250	-	9.2 – 185	TR250S12	-	-
3/4" Square	25.0 – 500	-	18.5 – 370	TR500S12	TRD500S12	TRDA500S12

*Industry standard transducers require ETA2-TC cable.

Stationary Transducers



Drive Size	Transducer Range		Stationary Transducer	ETA Series “Smart” Transducers	Part Number Joint Simulator
	Nm	ft-lb			
Stationary Transducers					
1/4" Square	1.5 – 30	1.1 – 22	TS30S4	TSD28S4	JKS30
3/8" Square	7.5 – 150	5.5 – 110	TS150S6	TSD135S6	JKS150
1/2" Square	15.0 – 300	11 – 221	TS300S8	TSD270S8	JKS300
3/4" Square	50.0 – 1000	37 – 738	TS1000S12	TSD1000S12	JKS1000



ETA JOINT SIMULATORS

The joint simulators have a range of up to 1,000 Nm. Joint rate can be changed to emulate different joint conditions, ranging from hard to soft. They are useful in tool cribs to preset tools for production and test capability under controlled joint rates. The joint kits are available as separate items or as a kit with a stationary transducer.

Bench Top Joint Simulators for Rotary Transducers



Drive Size	Joint Capacity	Joint Simulator
Bench Top Joint Simulators for Rotary Transducers		
1/4" Square	20 Nm	JKR20
3/8" Square	75 Nm	JKR75
1/2" Square	180 Nm	JKR180
3/4" Square	500 Nm	JKR500

Calibration Service

For calibration or repair of ETT-E wrenches, ETW-A wrenches, ETA analyzers, transducers, and ETA simulators, send to:



**Ontario's Largest
Pneumatic & Hydraulic Tool Distributor**

1-2430 Lucknow Drive, Mississauga, Ontario L5S 1V3. Tel: 905-672-5557 Fax: 905-672-5559
Email: sales@dobcoeqp.com www.dobcoeqp.com